

### Aircore Drilling Confirms New Basement Gold Mineralisation

- Infill aircore drilling at Fremlins South confirms coherent regolith gold anomaly, which appears to be open and improving to the south. Intersections include:
  - 22 metres at 0.34g/t Au from 22 metres including 2 metres at 1.2g/t Au from 18 metres
  - 2 metres at 1.06g/t Au from 54 metres
- First pass aircore drilling beneath historical gold-in-lag anomalies at Olsen and Newkirk identified continuous regolith gold mineralisation confirming the ineffective nature of historical shallow vacuum and RAB drilling in areas with strongly leached regolith.
- High grade gold mineralisation intersected at Olsen including 2 metres at 3.04g/t Au from 14 metres
- Follow-up RC drilling and further aircore drilling are planned at Fremlins South, Olsen and Newkirk in the 2024 field season

Hamelin Gold Limited (“Hamelin” or the “Company”) (ASX:HMG) is pleased to announce the return of assays from aircore drilling of the Fremlins South, Newkirk, Olsen and Camel East prospects within the West Tanami project in Western Australia (Figure 1).

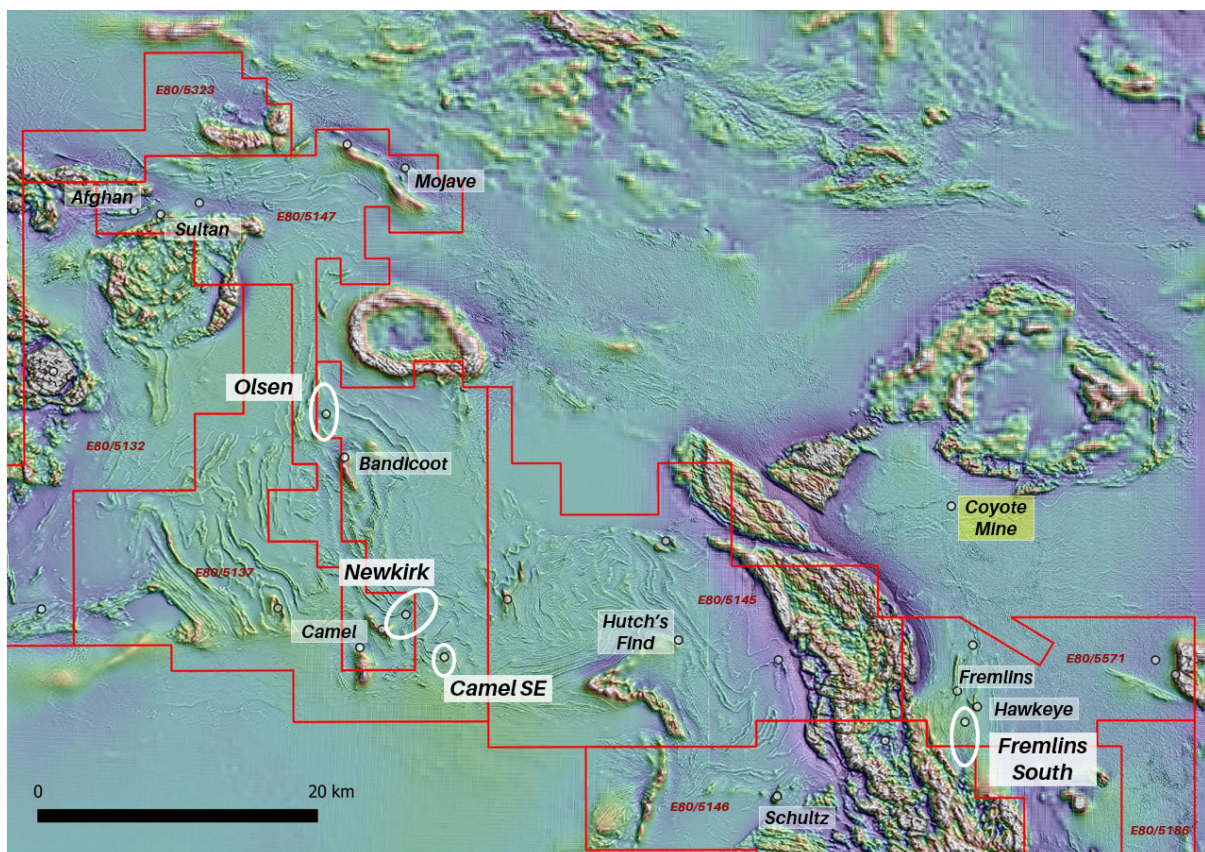


Figure 1: Prospect location plan over RTP residual (1K) magnetics

**Commenting on the aircore results, Hamelin Gold Managing Director Peter Bewick said:**

*“The aircore drilling completed by Hamelin across the West Tanami project has confirmed the importance of drilling through the entire regolith sequence when assessing gold prospects. At Fremlins South, Newkirk and Olsen previous shallow auger and RAB drilling of geochemical anomalies had failed to define the source of the gold anomalism because holes were terminated within the leached zone.*

*Drilling to refusal with the aircore rig has successfully defined coherent zones of gold anomalism and bedrock gold intersections that provide focus for follow up RC drilling. Initial RC drilling of these prospects will commence early in the 2024 field season.”*

### **Fremlins South Prospect Infill Aircore**

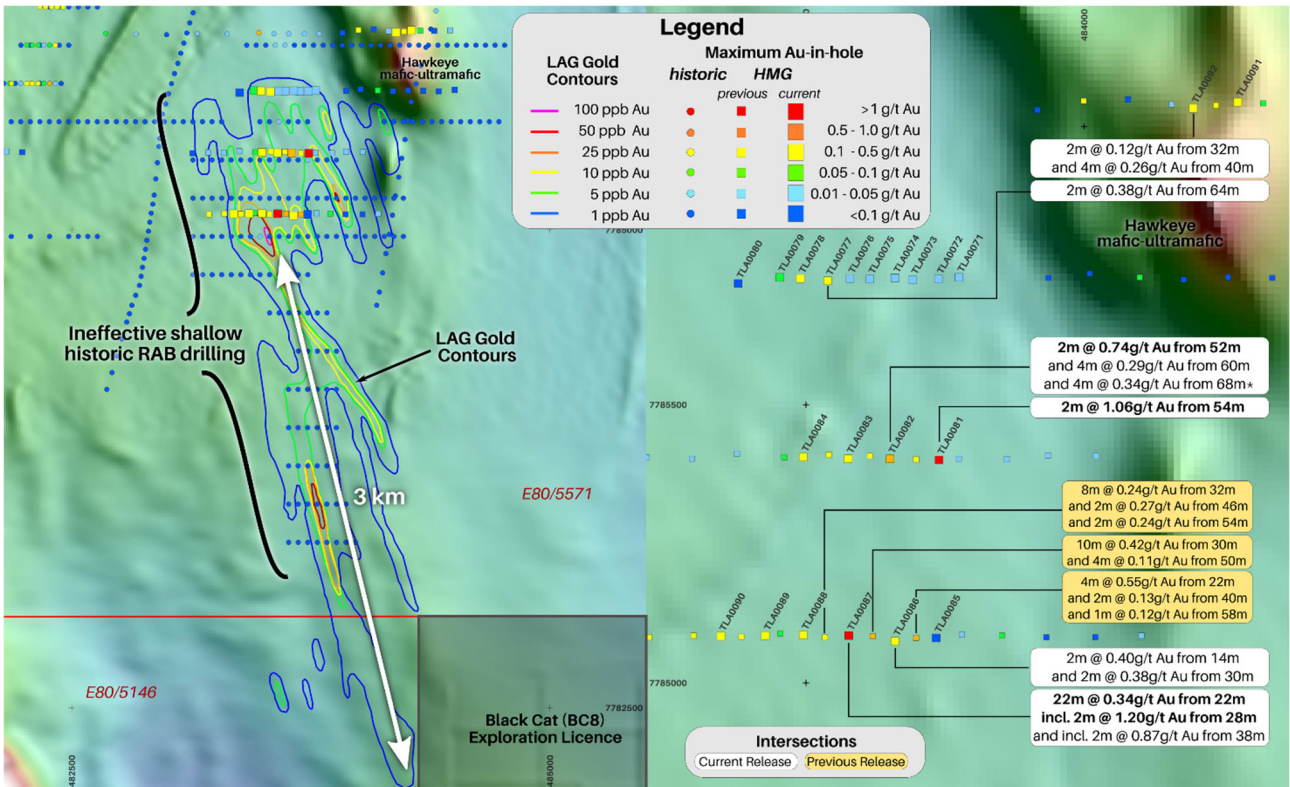
The Fremlins gold prospect (“Fremlins”) is located 8 kilometres south of the Coyote Gold Mine. Fremlins consists of two parallel +6-kilometre antiform-hosted gold trends defined by shallow RAB, vacuum and RC drilling. Both mineralised trends are covered by a 20-metre-thick leached regolith profile. Fremlins South is the southern extension of the eastern gold trend and extends a further 3 kilometres to the south defined by a gold-in-LAG sampling anomaly. Historical shallow RAB drilling (average 7 metre hole depth) over the anomaly is considered an ineffective test due to not penetrating the leached zone.

First pass aircore testing of the Fremlins South anomaly was undertaken with 320 metre spaced traverses with 80 metre hole spacing (ASX Announcement 16 October 2023). This aircore program defined a +200-metre wide, +100ppb gold anomaly below the leached zone which confirmed the ineffective nature of the previous RAB test and the effectiveness of the historical LAG sampling (Figure 2a).

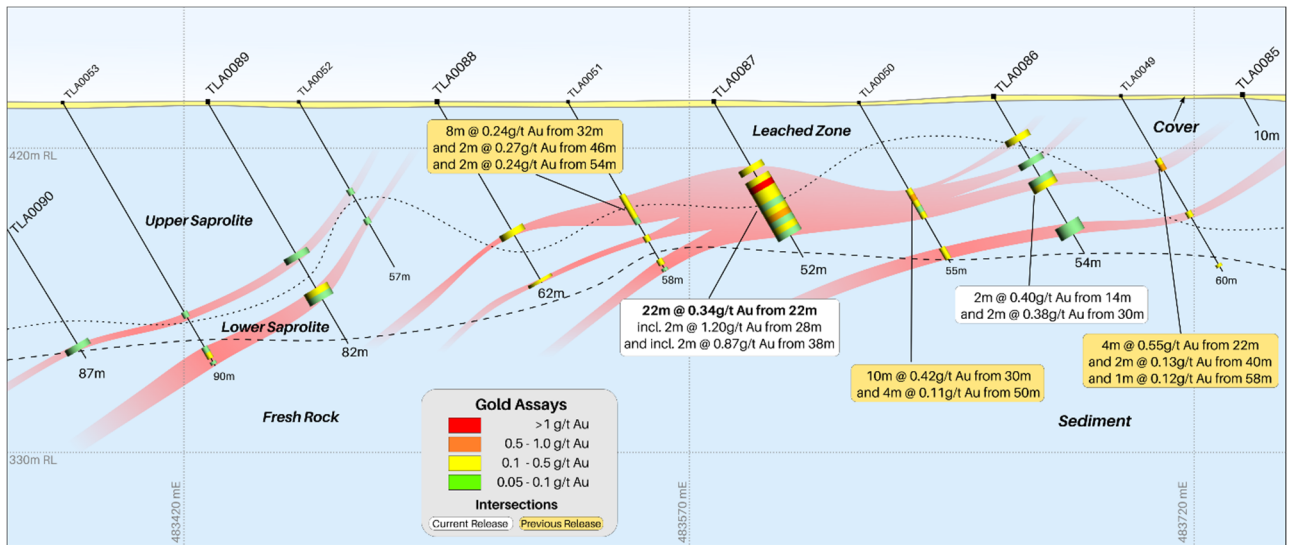
A second program of aircore drilling was completed in October 2023 infilling the initial 80 metre spaced holes to 40 metres within the gold anomaly to identify potential high-grade corridors (Figure 2b). The drilling has successfully infilled the anomaly confirming coherent regolith gold mineralisation potentially indicative of a primary mineralised system. The southern most aircore traverse (Figure 3) contains the highest gold grades and best continuity, suggesting the system is improving to the south. The best intersections include:

- TLA0087: **22 metres at 0.34 g/t Au from 22 metres**  
including 2 metres at 1.2 g/t Au from 28 metres
- TLA0081: **2 metres at 1.06 g/t Au from 54 metres**
- TLA0082: 4 metres at 0.29 g/t Au from 60 metres  
and 4 metres at 0.34 g/t Au from 68 metres to end of hole

As gold in the regolith at Fremlins South leaches strongly, there is the potential that related mineralised structures will increase in grade in fresh rock. The remainder of the 3 kilometre long gold anomaly at Fremlins South will be drill tested with a program of aircore drilling early in the 2024 field season following completion of a heritage survey and regulatory approvals. An RC drill program targeting primary gold mineralised structures will be completed in the second quarter of 2024.



Fremlins South **Figure 2a:** Hamelin drilling and historic drilling max Au-in-hole with geochemical contours over RTP residual (1K) magnetics. **Figure 2b:** Fremlins South aircore maximum gold in hole.



**Figure 3:** Fremlins South – Cross Section 7785080mN

## Olsen Prospect

The Olsen prospect (“Olsen”) is located along an interpreted north-west splay propagating from a flexure in the regional Hero Fault (ASX Announcement 7 September 2023). This splay structure is associated with a coincident 2.5 kilometre long north-west striking gold anomaly in LAG and a distinct zone of magnetic enhancement. A second parallel splay 1.3 kilometres to the south of the main Olsen anomaly hosts a coincident 2.1 kilometre gold in LAG anomaly. The LAG anomalies occur in an area of sand and sheetwash cover making these coherent low level gold anomalies of particular interest.

Two 320-metre spaced north-south aircore traverses were drilled at Olsen (Figure 4), testing the eastern part of the two large geochemical anomalies in areas of magnetic enhancement. The drilling identified two coherent regolith gold anomalies coincident with the existing LAG anomalies within

deeply weathered sediments and dolerite (Figure 5). The confirmation of a bedrock source for both anomalies confirms these splay structures are mineralised gold-bearing structures. The best results in the Olsen aircore program are:

- TSA0065: **2 metres at 3.04 g/t Au from 14 metres**  
and 4 metres at 0.30 g/t Au from 36 metres  
and 2 metres at 0.48 g/t Au from 62 metres
- TSA0066: **2 metres at 0.64 g/t Au from 66 metres**  
and 2 metres at 0.13 g/t Au from 72 metres

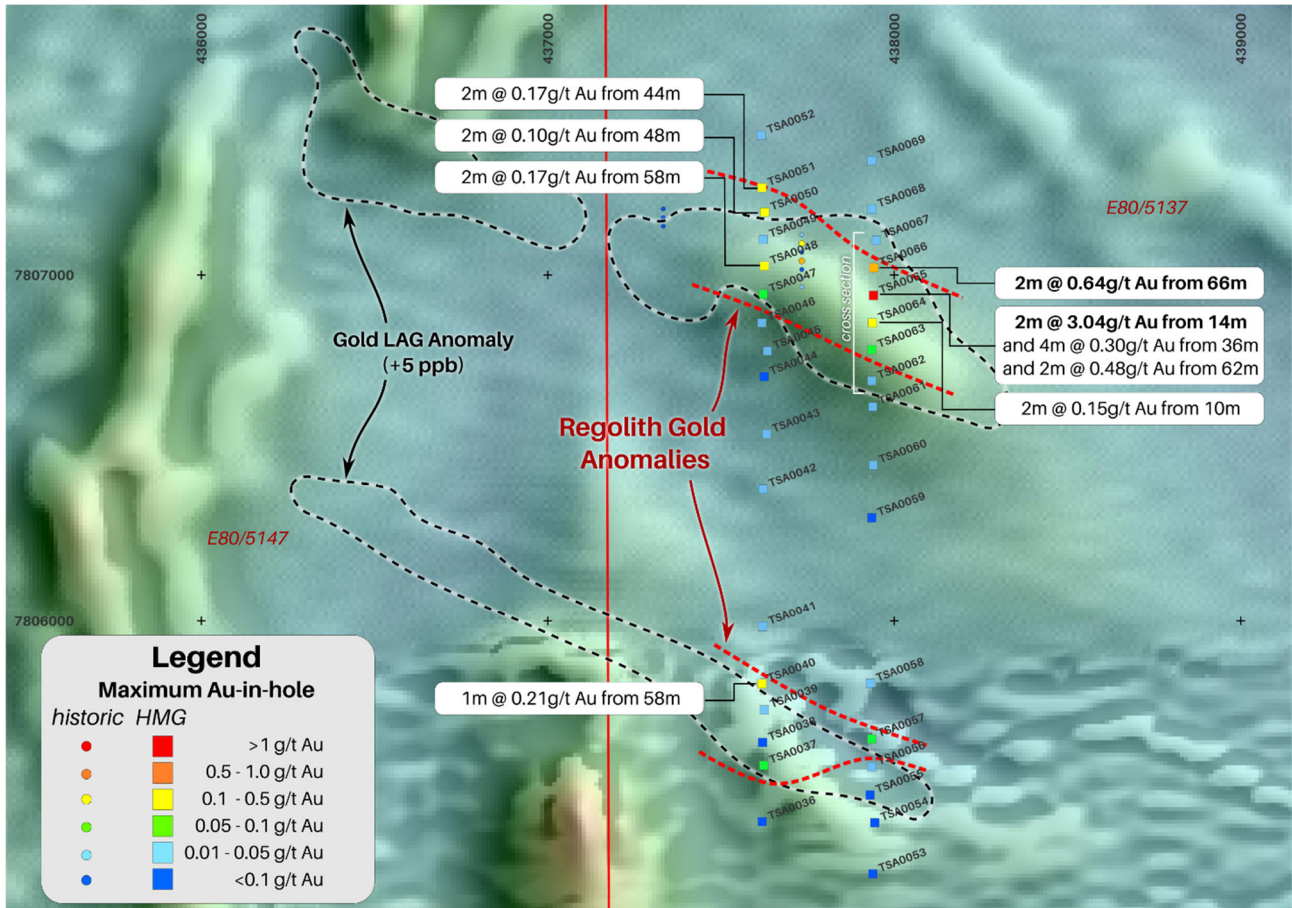


Figure 4: Olsen maximum gold in hole over RTP residual (1K) magnetics

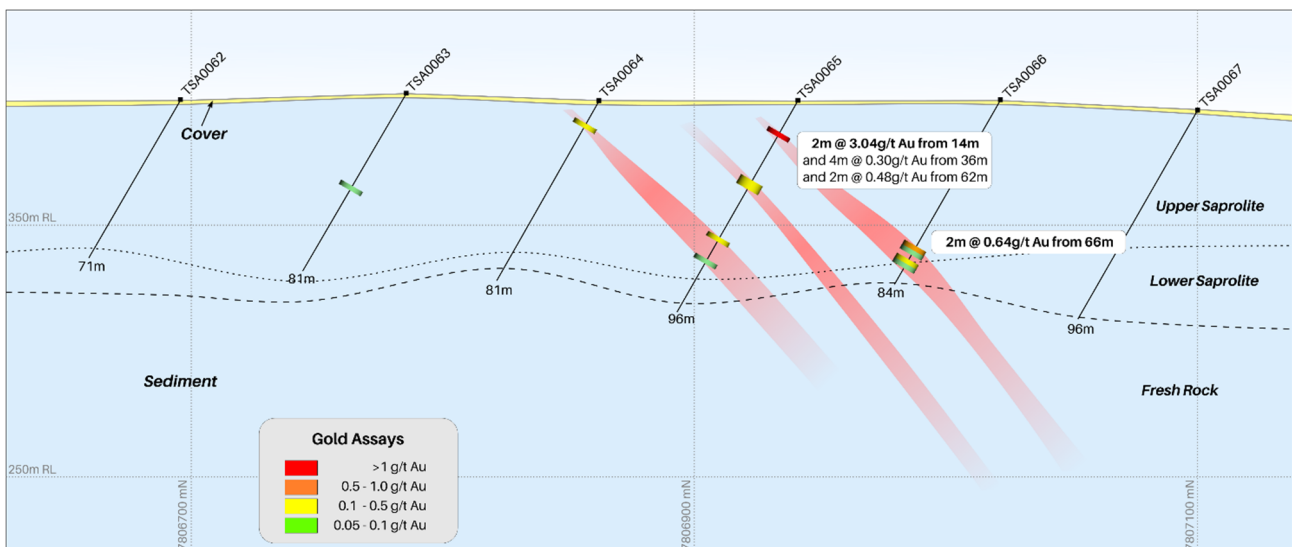


Figure 5: Olsen – Cross Section 437,940mE

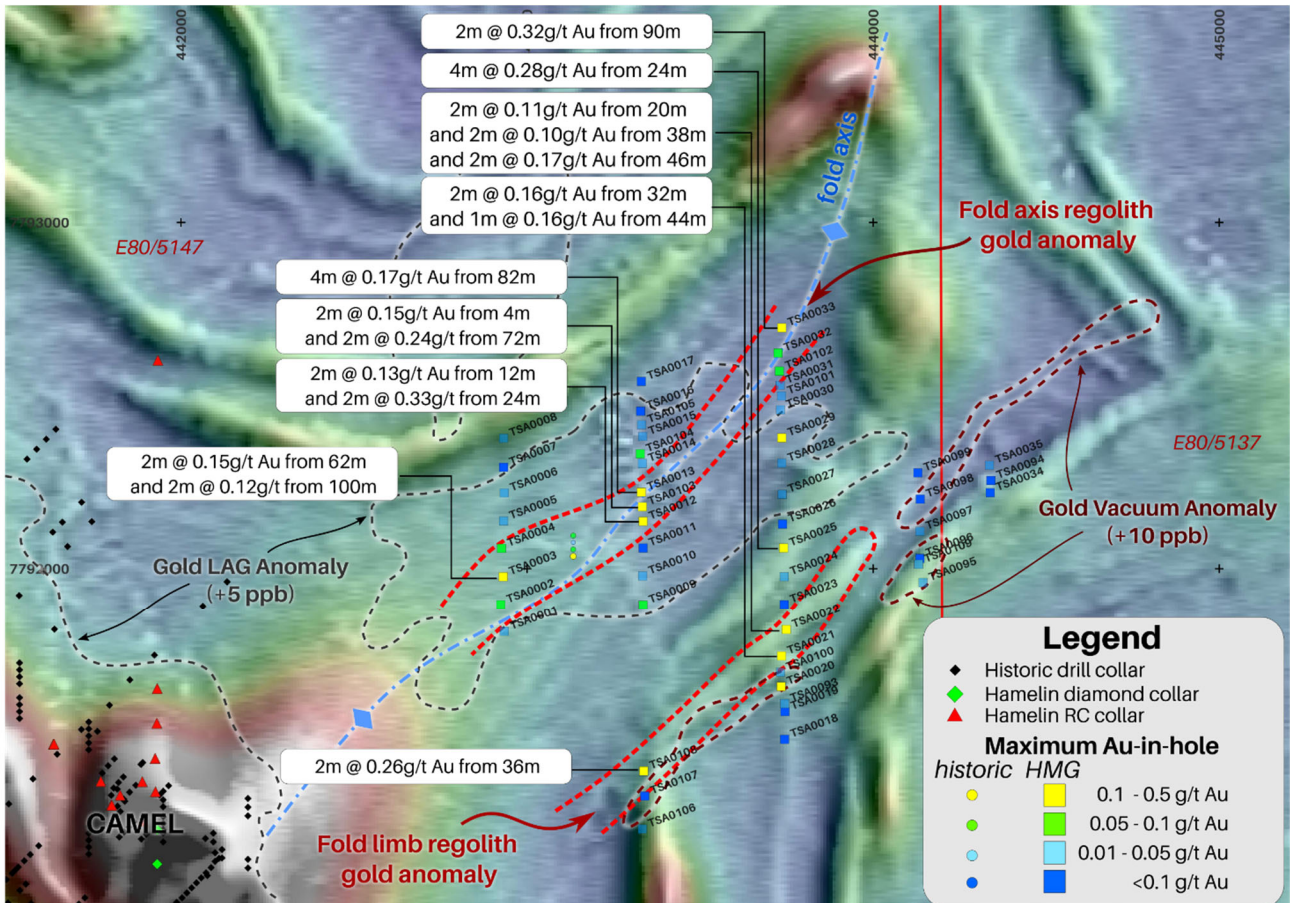
Future work at Olsen will aim to better define the extent of these two mineralised trends using Ultrafine® surface sampling which will be used to target a follow-up aircore drill program. A subsequent RC drill program will likely follow, testing for a primary gold mineralisation source.

## Newkirk Prospect

The Newkirk prospect (“Newkirk”) is located at the eastern end of the 6-kilometre-long ENE Newkirk Gold Corridor. Newkirk is defined by a +1.5 kilometre long coincident gold and bismuth LAG anomaly hosted within the core of an interpreted ENE trending regional fold axis. The southern fold limb is defined by faulted dolerite sills and hosts a subparallel zone ENE of surface gold anomalism defined by LAG and vacuum drilling.

An aircore drilling program of 400 metre spaced north-south traverses testing for regolith-hosted gold anomalism beneath the geochemical anomalies was completed at Newkirk in September 2023. This drilling identified deeply weathered and highly veined rocks in the fold core with an average aircore hole depth of 94 metres. The drilling confirmed the core of the fold axis hosts a corridor of +100 ppb gold and bismuth mineralisation (Figure 6). Drilling across the southern fold limb identified a much shallower weathering profile with low-level gold mineralisation identified on two sections, however the shallow nature of much of the drilling makes this test less comprehensive.

The confirmation of regolith-hosted mineralisation along the fold axis and southern limb suggests the Newkirk Gold Corridor is a large and poorly tested gold system. Future work will be undertaken using Ultrafine® surface sampling to assess strike extensions and other favourable structural settings in the Newkirk-Camel area prior to further drill testing.



**Figure 6:** Newkirk maximum gold in hole over detailed RTP residual (1K) magnetics

## **Camel SE Prospect**

The Camel SE prospect (“Camel SE”) is located 4.5 kilometres east of the Camel prospect. Camel SE is characterised by a gold in LAG anomaly in an area of structural complexity within a NE trending regional fold.

A single NNE traverse of seven vertical aircore holes was drilled to test a defined surface gold anomaly with faulted geology. Drilling intersected dolerite intrusions and carbonaceous shales within the sedimentary sequence in addition to strong quartz veining. The intersected gold anomalism was typically isolated and vein-associated with a best intersection of 4m at 0.50 g/t Au from 22 metres in TSA0116.

## **2024 Field Season**

The 2024 field season will initially assess the Sultan Main and Sultan West prospects. An RC drill program is planned to be completed across the Sultan West prospect at the start of the field season (March/April 2024) to test for primary gold mineralisation at depth and along strike of the mineralisation defined in the aircore drill program (ASX Announcement 2 January 2024). An EIS co-funded RC drilling program will also be completed at the Sultan Main prospect to follow up high grade gold mineralisation intersected in TSD0007 (7.6 metres at 3.2g/t Au) that remains open down dip and along strike (see ASX announcement 12 December 2022).

Aircore drilling will be completed to improve definition of identified mineralised structures at Fremlins South, Olsen and the Newkirk Gold Corridor. RC drill testing at Fremlins South and Olsen is planned to be completed after Sultan programs. Evaluation of potential strike extensions at Olsen, Newkirk and Fremlins South will be undertaken using aircore drilling and Ultrafine<sup>®</sup> sampling.

Large areas of Hamelin’s tenure have previously been assessed with vacuum drilling and shallow RAB which has been shown to be ineffective in areas of deep weathering and leached regolith. Regional Ultrafine<sup>®</sup> sampling programs will be completed in targeted areas in the first half of 2024 and the results of these programs will be interpreted and ranked and aircore testing will likely be undertaken to test priority prospects in the second half of the 2024 field season.

**Table 1:** Fremlins, Newkirk, Came SE and Olsen Prospects – Drill hole assay results (>0.1 g/t Au)  
\* = end of hole interval

Hole ID	Prospect	m From	m To	Interval	Au ppm	Bi ppm
TLA0077	Fremlins	40	42	2	0.21	0.6
TLA0078	Fremlins	64	66	2	0.38	2
TLA0081	<b>Fremlins</b>	<b>54</b>	<b>56</b>	<b>2</b>	<b>1.06</b>	<b>0.4</b>
TLA0082	Fremlins	52	54	2	0.74	0.6
and	Fremlins	60	64	4	0.29	0.6
and	Fremlins	68	72*	4	0.34	1.2
TLA0083	Fremlins	74	76	2	0.18	0.7
TLA0084	Fremlins	32	34	2	0.13	0.3
and	Fremlins	44	46	2	0.16	0.3
TLA0086	Fremlins	14	16	2	0.40	5
and	Fremlins	30	32	2	0.38	0.7
TLA0087	<b>Fremlins</b>	<b>22</b>	<b>44</b>	<b>22</b>	<b>0.34</b>	<b>1.2</b>
incl.	<b>Fremlins</b>	<b>28</b>	<b>30</b>	<b>2</b>	<b>1.20</b>	<b>2.3</b>
incl.	<b>Fremlins</b>	<b>38</b>	<b>40</b>	<b>2</b>	<b>0.87</b>	<b>1.8</b>
TLA0088	Fremlins	44	46	2	0.11	0.2
and	Fremlins	61	62*	1	0.11	4.1
TLA0089	Fremlins	64	66	2	0.46	18.7
TLA0090	Fremlins	26	28	2	0.15	0.3
TLA0091	Fremlins	40	42	2	0.18	0.2
TLA0092	Fremlins	32	34	2	0.12	1
and	Fremlins	40	46	6	0.26	0.5
TLA0093	Fremlins	34	36	2	0.13	0.8
TSA0003	Newkirk	62	64	2	0.15	21.8
and	Newkirk	100	102	2	0.12	5
TSA0012	Newkirk	12	14	2	0.13	0.9
and	Newkirk	24	26	2	0.33	22.2
TSA0013	Newkirk	82	86	4	0.17	13.5
TSA0020	Newkirk	42	44	2	0.19	1.3
and	Newkirk	56	58	2	0.11	1.1
TSA0021	Newkirk	32	34	2	0.16	9.7
and	Newkirk	44	45*	1	0.16	8.1
TSA0022	Newkirk	20	22	2	0.11	20.4
and	Newkirk	38	40	2	0.10	1.6
and	Newkirk	46	48	2	0.17	52
TSA0025	Newkirk	24	28	4	0.28	18.5
TSA0029	Newkirk	46	48	2	0.13	94
TSA0033	Newkirk	90	92	2	0.32	11.1
TSA0103	Newkirk	4	6	2	0.15	49.9
and	Newkirk	72	74	2	0.24	0.9
TSA0108	Newkirk	36	38	2	0.26	6.2
TSA0040	Olsen	58	59*	1	0.21	21.5
TSA0048	Olsen	58	60	2	0.17	0.3
TSA0050	Olsen	48	50	2	0.10	0.5
TSA0051	Olsen	44	46	2	0.17	9.4
TSA0064	Olsen	10	12	2	0.15	7
TSA0065	<b>Olsen</b>	<b>14</b>	<b>16</b>	<b>2</b>	<b>3.04</b>	<b>191</b>
and	Olsen	36	40	4	0.30	9.5

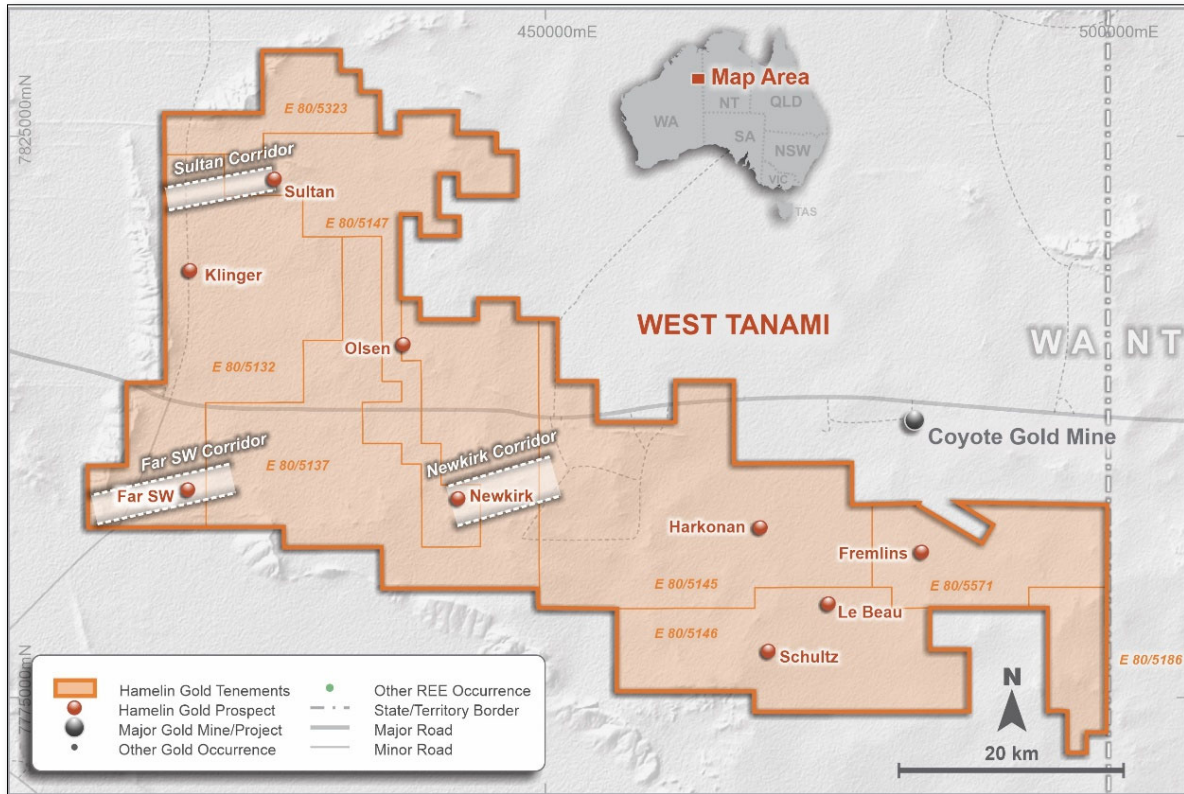
Hole ID	Prospect	m From	m To	Interval	Au ppm	Bi ppm
and	Olsen	62	64	2	0.48	9
<b>TSA0066</b>	<b>Olsen</b>	<b>66</b>	<b>68</b>	<b>2</b>	<b>0.64</b>	<b>15.4</b>
and	Olsen	72	74	2	0.13	1.6
<b>TSA0110</b>	Camel SE	20	22	2	0.21	2.8
<b>TSA0116</b>	Camel SE	22	26	4	0.50	2.5
incl.	Camel SE	22	24	2	0.61	0.3

**Table 2:** Fremlins, Newkirk, Came SE and Olsen Prospects – Aircore Collar information (MGA94 Zone52)

Hole ID	Prospect	Easting	Northing	RL	Dip	Azi	EOH(m)
TLA0071	Fremlins	483775	7785729	435	-60	090	47
TLA0072	Fremlins	483738	7785726	436	-60	090	61
TLA0073	Fremlins	483692	7785725	436	-60	090	60
TLA0074	Fremlins	483660	7785728	436	-60	090	36
TLA0075	Fremlins	483615	7785726	436	-60	090	42
TLA0076	Fremlins	483579	7785727	436	-60	090	57
TLA0077	Fremlins	483539	7785723	436	-60	090	65
TLA0078	Fremlins	483490	7785727	435	-60	090	68
TLA0079	Fremlins	483453	7785729	435	-60	090	89
TLA0080	Fremlins	483378	7785718	433	-60	090	92
TLA0081	Fremlins	483739	7785401	437	-60	090	61
TLA0082	Fremlins	483651	7785403	438	-60	090	72
TLA0083	Fremlins	483576	7785403	438	-60	090	84
TLA0084	Fremlins	483495	7785406	435	-60	090	67
TLA0085	Fremlins	483734	7785081	436	-60	090	10
TLA0086	Fremlins	483660	7785075	436	-60	090	54
TLA0087	Fremlins	483577	7785085	434	-60	090	52
TLA0088	Fremlins	483495	7785086	434	-60	090	62
TLA0089	Fremlins	483427	7785085	434	-60	090	82
TLA0090	Fremlins	483347	7785084	433	-60	090	87
TLA0091	Fremlins	484276	7786044	431	-60	090	56
TLA0092	Fremlins	484196	7786033	431	-60	090	54
TLA0093	Fremlins	484465	7786674	429	-60	090	38
TLA0094	Fremlins	484387	7786671	429	-60	090	41
TSA0001	Newkirk	442934	7791817	444	-60	180	111
TSA0002	Newkirk	442924	7791896	442	-60	180	108
TSA0003	Newkirk	442931	7791977	443	-60	180	123
TSA0004	Newkirk	442926	7792059	443	-60	180	122
TSA0005	Newkirk	442932	7792138	441	-60	180	72
TSA0006	Newkirk	442934	7792219	441	-60	180	78
TSA0007	Newkirk	442932	7792293	442	-60	180	108
TSA0008	Newkirk	442932	7792377	441	-60	180	75
TSA0009	Newkirk	443335	7791895	445	-60	180	111
TSA0010	Newkirk	443334	7791979	446	-60	180	78
TSA0011	Newkirk	443335	7792060	446	-60	180	91
TSA0012	Newkirk	443335	7792137	445	-60	180	90
TSA0013	Newkirk	443330	7792221	443	-60	180	101
TSA0014	Newkirk	443333	7792304	443	-60	180	84

Hole ID	Prospect	Easting	Northing	RL	Dip	Azi	EOH(m)
TSA0015	Newkirk	443334	7792382	443	-60	180	90
TSA0016	Newkirk	443328	7792455	444	-60	180	101
TSA0017	Newkirk	443330	7792541	442	-60	180	71
TSA0018	Newkirk	443744	7791506	441	-60	180	51
TSA0019	Newkirk	443745	7791586	443	-60	180	76
TSA0020	Newkirk	443734	7791658	445	-60	180	79
TSA0021	Newkirk	443735	7791746	446	-60	180	45
TSA0022	Newkirk	443749	7791822	445	-60	180	80
TSA0023	Newkirk	443743	7791896	444	-60	180	57
TSA0024	Newkirk	443743	7791977	443	-60	180	66
TSA0025	Newkirk	443741	7792060	446	-60	180	45
TSA0026	Newkirk	443738	7792129	445	-60	180	55
TSA0027	Newkirk	443737	7792215	445	-60	180	85
TSA0028	Newkirk	443736	7792305	445	-60	180	121
TSA0029	Newkirk	443736	7792378	445	-60	180	59
TSA0030	Newkirk	443732	7792459	442	-60	180	99
TSA0031	Newkirk	443731	7792530	442	-60	180	93
TSA0032	Newkirk	443725	7792623	442	-60	180	88
TSA0033	Newkirk	443736	7792696	442	-60	180	93
TSA0034	Newkirk	444338	7792220	449	-60	180	37
TSA0035	Newkirk	444336	7792299	448	-60	180	42
TSA0036	Olsen	437619	7805422	399	-60	180	98
TSA0037	Olsen	437623	7805584	400	-60	180	65
TSA0038	Olsen	437620	7805650	398	-60	180	84
TSA0039	Olsen	437625	7805744	397	-60	180	46
TSA0040	Olsen	437618	7805819	398	-60	180	59
TSA0041	Olsen	437620	7805984	398	-60	180	91
TSA0042	Olsen	437621	7806383	398	-60	180	123
TSA0043	Olsen	437631	7806541	398	-60	180	132
TSA0044	Olsen	437624	7806707	398	-60	180	81
TSA0045	Olsen	437634	7806781	398	-60	180	72
TSA0046	Olsen	437618	7806862	396	-60	180	63
TSA0047	Olsen	437622	7806945	397	-60	180	50
TSA0048	Olsen	437625	7807026	397	-60	180	61
TSA0049	Olsen	437622	7807103	397	-60	180	75
TSA0050	Olsen	437626	7807181	395	-60	180	75
TSA0051	Olsen	437618	7807252	394	-60	180	55
TSA0052	Olsen	437616	7807403	395	-60	180	61
TSA0053	Olsen	437938	7805272	402	-60	180	76
TSA0054	Olsen	437944	7805419	400	-60	180	90
TSA0055	Olsen	437930	7805499	402	-60	180	96
TSA0056	Olsen	437935	7805580	401	-60	180	30
TSA0057	Olsen	437935	7805660	401	-60	180	34
TSA0058	Olsen	437931	7805820	402	-60	180	39
TSA0059	Olsen	437935	7806300	399	-60	180	91
TSA0060	Olsen	437939	7806452	400	-60	180	132
TSA0061	Olsen	437938	7806620	399	-60	180	98
TSA0062	Olsen	437935	7806695	399	-60	180	71

Hole ID	Prospect	Easting	Northing	RL	Dip	Azi	EOH(m)
TSA0063	Olsen	437935	7806785	402	-60	180	81
TSA0064	Olsen	437937	7806862	399	-60	180	81
TSA0065	Olsen	437940	7806941	399	-60	180	96
TSA0066	Olsen	437941	7807021	399	-60	180	84
TSA0067	Olsen	437948	7807100	396	-60	180	96
TSA0068	Olsen	437935	7807190	397	-60	180	98
TSA0069	Olsen	437935	7807330	395	-60	180	88
TSA0093	Newkirk	443744	7791609	443	-60	180	59
TSA0094	Newkirk	444340	7792255	450	-60	180	33
TSA0095	Newkirk	444144	7791960	446	-60	180	41
TSA0096	Newkirk	444135	7792030	448	-60	180	21
TSA0097	Newkirk	444135	7792108	447	-60	180	55
TSA0098	Newkirk	444136	7792201	446	-60	180	82
TSA0099	Newkirk	444129	7792277	448	-60	180	24
TSA0100	Newkirk	443732	7791699	446	-60	180	66
TSA0101	Newkirk	443735	7792499	442	-60	180	87
TSA0102	Newkirk	443729	7792571	443	-60	180	104
TSA0103	Newkirk	443333	7792179	444	-60	180	99
TSA0104	Newkirk	443327	7792332	443	-60	180	102
TSA0105	Newkirk	443331	7792416	445	-60	180	83
TSA0106	Newkirk	443333	7791248	444	-60	180	23
TSA0107	Newkirk	443340	7791343	445	-60	180	24
TSA0108	Newkirk	443337	7791415	446	-60	180	48
TSA0109	Newkirk	444131	7792013	448	-60	180	21
TSA0110	Camel SE	446118	7789193	447	-90	-	91
TSA0111	Camel SE	446146	7789259	447	-90	-	74
TSA0112	Camel SE	446182	7789335	448	-90	-	79
TSA0113	Camel SE	446210	7789410	449	-90	-	103
TSA0114	Camel SE	446259	7789474	448	-90	-	114
TSA0115	Camel SE	446264	7789564	449	-90	-	72
TSA0116	Camel SE	446285	7789639	452	-90	-	87



**Figure 7: West Tanami Project – Granted Tenements and Prospect location map**

This announcement has been authorised by the Board of Directors.

For further information, please contact:

Peter Bewick

Managing Director and CEO

+61 8 9486 9455

[contact@hamelinalgold.com.au](mailto:contact@hamelinalgold.com.au)

Michael Vaughan

Fivemark Partners

+41 422 602 720

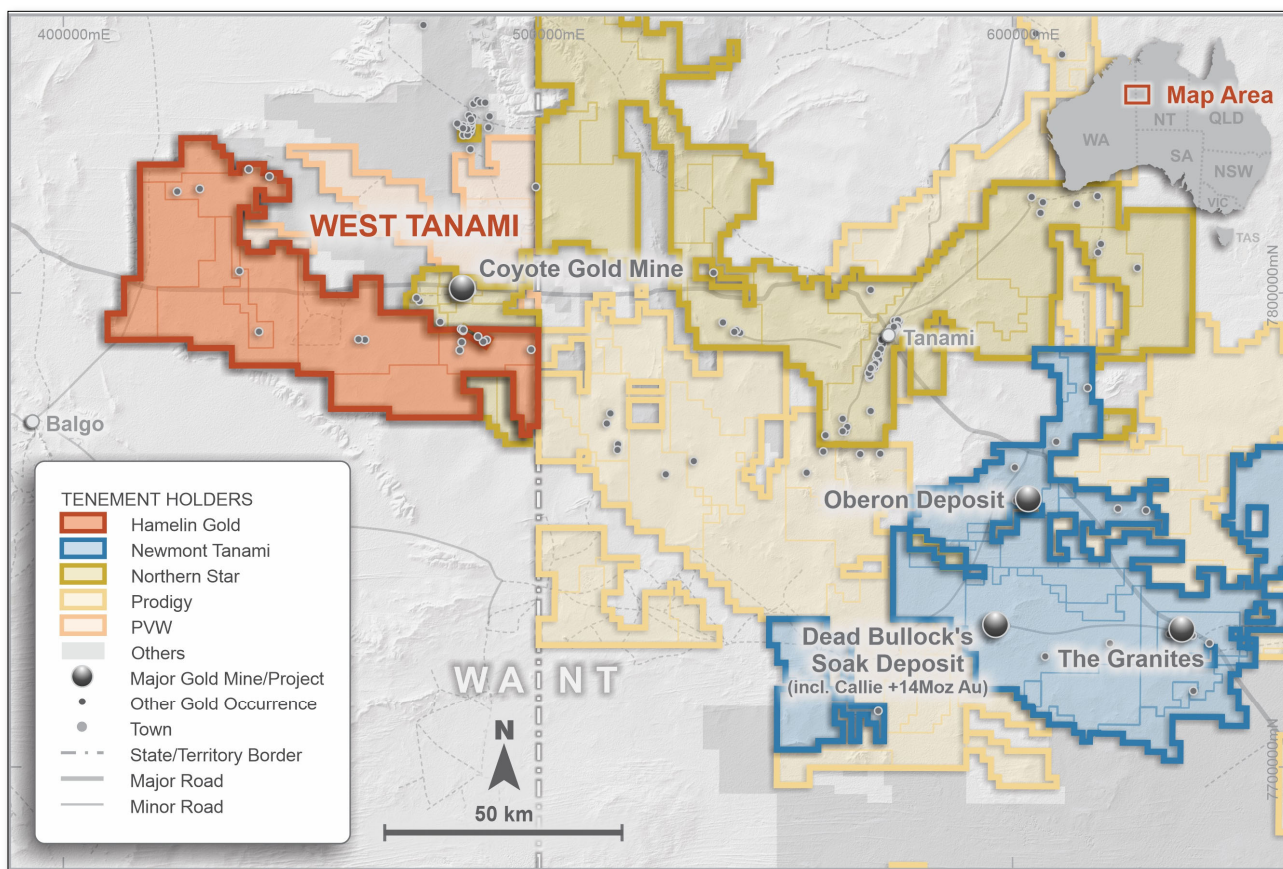
[michael.vaughan@fivemark.com.au](mailto:michael.vaughan@fivemark.com.au)

*The information in this report that relates to Exploration Results is based on information compiled by Mr. Peter Bewick who is a Member of the Australasian Institute of Mining and Metallurgy. Mr. Bewick holds shares and options in and is a full time employee of Hamelin Gold Ltd and has sufficient experience which is relevant to the style of mineralisation under consideration to qualify as a Competent Person as defined in the 2012 Edition of the 'Australian Code for Reporting of Exploration Results, Mineral Resources and Ore Reserves'. Mr Bewick consents to the inclusion in the report of the matters based on the information compiled by him, in the form and context in which it appears.*

*The Company confirms that it is not aware of any new information or data that materially affects the information in the relevant ASX releases and the form and context of the announcement has not materially changed. This announcement has been authorised for release by the Board of Hamelin Gold Limited.*

## About Hamelin Gold

Hamelin Gold Limited (**ASX:HMG**) is an ASX-listed gold exploration company based in Perth, Western Australia. Hamelin has a landholding of 2,489km<sup>2</sup> in the Tanami Gold Province in Western Australian (Figure 8). The province is prospective for high value, large scale gold deposits and hosts Newmont's Tier 1 Callie Operations in the Northern Territory. Hamelin's West Tanami project is a belt-scale Greenfields opportunity hosting the same geology and key structures as Callie with minimal modern exploration completed across the Hamelin landholdings.



**Figure 8:** Hamelin's West Tanami Project tenure within the Tanami Gold Province

Hamelin is undertaking systematic whole of project target generation activities in the West Tanami targeting world class mineral systems.

The Company has a strong Board and Management team and is well funded.

Hamelin's shareholders include highly regarded gold miners Gold Fields Limited (JSE/NYSE:GFI) and Silver Lake Resources Limited (ASX:SLR).

## JORC Code, 2012 Edition – Table 1 report

### Section 1 Sampling Techniques and Data

Criteria	JORC Code explanation	Commentary
<b>Sampling techniques</b>	<ul style="list-style-type: none"> <li>• <i>Nature and quality of sampling (eg cut channels, random chips, or specific specialised industry standard measurement tools appropriate to the minerals under investigation, such as down hole gamma sondes, or handheld XRF instruments, etc). These examples should not be taken as limiting the broad meaning of sampling.</i></li> <li>• <i>Include reference to measures taken to ensure sample representivity and the appropriate calibration of any measurement tools or systems used.</i></li> <li>• <i>Aspects of the determination of mineralisation that are Material to the Public Report.</i></li> <li>• <i>In cases where ‘industry standard’ work has been done this would be relatively simple (eg ‘reverse circulation drilling was used to obtain 1 m samples from which 3 kg was pulverised to produce a 30 g charge for fire assay’). In other cases more explanation may be required, such as where there is coarse gold that has inherent sampling problems. Unusual commodities or mineralisation types (eg submarine nodules) may warrant disclosure of detailed information.</i></li> </ul>	<p>Aircore drilling was used to obtain samples for geological logging and assaying.</p> <p>Aircore drilling was used to obtain samples at 1m intervals that were then composited in 2m samples and then split to produce a ~3kg sample.</p>
<b>Drilling techniques</b>	<ul style="list-style-type: none"> <li>• <i>Drill type (eg core, reverse circulation, open-hole hammer, rotary air blast, auger, Bangka, sonic, etc) and details (eg core diameter, triple or standard tube, depth of diamond tails, face-sampling bit or other type, whether core is oriented and if so, by what method, etc).</i></li> </ul>	<p>A Challenger RA 150 aircore rig mounted on a 4 x 4 MAN truck was utilised to complete the drill program</p>
<b>Drill sample recovery</b>	<ul style="list-style-type: none"> <li>• <i>Method of recording and assessing core and chip sample recoveries and results assessed.</i></li> <li>• <i>Measures taken to maximise sample recovery and ensure representative nature of the samples.</i></li> <li>• <i>Whether a relationship exists between sample recovery and grade and whether sample bias may have occurred due to preferential loss/gain of fine/coarse material.</i></li> </ul>	<p>Visual estimates of sample recovery are made on site and all care is taken to obtain 100% sample recovery and representative samples are collected.</p> <p>No relationship between sample recovery and grade is known at this stage, more drilling is required to establish if there is any sample bias.</p>

<b>Logging</b>	<ul style="list-style-type: none"> <li>• Whether core and chip samples have been geologically and geotechnically logged to a level of detail to support appropriate Mineral Resource estimation, mining studies and metallurgical studies.</li> <li>• Whether logging is qualitative or quantitative in nature. Core (or costean, channel, etc) photography.</li> <li>• The total length and percentage of the relevant intersections logged.</li> </ul>	<p>Aircore samples are logged by Hamelin geologists. Magnetic susceptibility and pXRF measurements are taken at each metre interval. Aircore samples are drilled and laid out in 1m intervals.</p> <p>Geological logging is both qualitative and quantitative. Lithology, alteration, mineralisation, veins and structural data is captured digitally and stored securely in the Hamelin Gold database.</p>
<b>Sub-sampling techniques and sample preparation</b>	<ul style="list-style-type: none"> <li>• If core, whether cut or sawn and whether quarter, half or all core taken.</li> <li>• If non-core, whether riffled, tube sampled, rotary split, etc and whether sampled wet or dry.</li> <li>• For all sample types, the nature, quality and appropriateness of the sample preparation technique.</li> <li>• Quality control procedures adopted for all sub-sampling stages to maximise representivity of samples.</li> <li>• Measures taken to ensure that the sampling is representative of the in situ material collected, including for instance results for field duplicate/second-half sampling.</li> <li>• Whether sample sizes are appropriate to the grain size of the material being sampled.</li> </ul>	<p>Aircore Drilling – 2m composite samples are collected via a scoop by Hamelin field staff. Sample preparation was completed at Bureau Veritas Minerals Pty Ltd Laboratories in Perth. Samples were dried, crushed, pulverised (90% passing at a <math>\leq 75\mu\text{m}</math> size fraction) and split into a sub – sample that was analysed. The nature and quality of the samples collected are considered appropriate for the style of mineralisation.</p> <p>Field duplicates are not collected for scooped aircore samples and no work has been done to date to determine if the sample sizes are appropriate for the material being sampled.</p>
<b>Quality of assay data and laboratory tests</b>	<ul style="list-style-type: none"> <li>• The nature, quality and appropriateness of the assaying and laboratory procedures used and whether the technique is considered partial or total.</li> <li>• For geophysical tools, spectrometers, handheld XRF instruments, etc, the parameters used in determining the analysis including instrument make and model, reading times, calibrations factors applied and their derivation, etc.</li> <li>• Nature of quality control procedures adopted (eg standards, blanks, duplicates, external laboratory checks) and whether acceptable levels of accuracy (ie lack of bias) and precision have been established.</li> </ul>	<p>The Aircore samples have been digested with Aqua Regia. This is a partial digest though is extremely efficient for extraction of gold. Easily digested elements show good recoveries however others (particularly the refractory oxides and silicates) are poorly extracted. Representative samples were collected and analysed for a multi element suite via ICPMS and ICPOES. Routine pXRF analysis has been completed down hole but this information does not form part of this report.</p> <p>Laboratory QAQC involves the use of internal lab standards using certified reference material and blanks as part of in-house procedures. Hamelin also submitted an independent suite of CRMs and blanks (see above). A formal review of this data is completed on a periodic basis.</p>
<b>Verification of sampling and assaying</b>	<ul style="list-style-type: none"> <li>• The verification of significant intersections by either independent or alternative company personnel.</li> <li>• The use of twinned holes.</li> <li>• Documentation of primary data, data entry procedures, data verification, data storage (physical and electronic) protocols.</li> <li>• Discuss any adjustment to assay data.</li> </ul>	<p>The intersections included in this report have been verified by Clayton Davys (Exploration Manager)</p> <p>Geological logging is completed using in-house logging data systems. All data entry is carried out by qualified personnel. Standard data entry is used on site and is backed up on external hard drives and then to a cloud based database.</p> <p>No adjustments have been made to the assay data</p>

<b>Location of data points</b>	<ul style="list-style-type: none"> <li>• Accuracy and quality of surveys used to locate drill holes (collar and down-hole surveys), trenches, mine workings and other locations used in Mineral Resource estimation.</li> <li>• Specification of the grid system used.</li> <li>• Quality and adequacy of topographic control.</li> </ul>	<p>Drill hole locations are collected by hand held GPS (<math>\pm 5</math>m)</p> <p>Grid Datum MGA94 UTM Zone 52S</p>
<b>Data spacing and distribution</b>	<ul style="list-style-type: none"> <li>• Data spacing for reporting of Exploration Results.</li> <li>• Whether the data spacing and distribution is sufficient to establish the degree of geological and grade continuity appropriate for the Mineral Resource and Ore Reserve estimation procedure(s) and classifications applied.</li> <li>• Whether sample compositing has been applied.</li> </ul>	<p>24 infill aircore holes were completed on four previous east-west traverses for a total of 1,438m, infilling previous drilling to a 40m spacing at the Fremmins Prospect testing previously identified gold anomalism.</p> <p>At Newkirk 52 aircore holes were completed for 3,858m on 400m to 200m spaced north-south traverses and 80m to 40m hole spacing testing for bedrock expression of surface geochemical Au-Bi anomalism.</p> <p>At Camel SE 7 aircore holes were completed for 619m on a single north northeast traverse with 80m hole spacing testing for bedrock expression of surface geochemical Au anomalism.</p> <p>At Olsen 34 aircore holes were completed for 2,672m on two 320m spaced north south traverses with 80m hole spacing testing for bedrock expression of surface geochemical Au anomalism.</p> <p>Mineralisation has not yet demonstrated to be sufficient in both geological and grade continuity appropriate for the Mineral Resource and Ore Reserve estimation procedure(s) and classifications to be applied.</p> <p>Aircore intervals have been composited using a length weighted methodology</p>
<b>Orientation of data in relation to geological structure</b>	<ul style="list-style-type: none"> <li>• Whether the orientation of sampling achieves unbiased sampling of possible structures and the extent to which this is known, considering the deposit type.</li> <li>• If the relationship between the drilling orientation and the orientation of key mineralised structures is considered to have introduced a sampling bias, this should be assessed and reported if material.</li> </ul>	<p>N/A – this is early stage drilling and the orientation of the hole with respect to key structures is not fully understood however the drilling has intersected the strata at an appropriate angle not to significantly bias samples.</p> <p>This is early stage drilling and the orientation of sampling to the mineralisation is not fully understood.</p>
<b>Sample security</b>	<ul style="list-style-type: none"> <li>• The measures taken to ensure sample security.</li> </ul>	<p>The chain of custody of the samples is managed by Hamelin. Samples were delivered by Hamelin personnel to the Coyote mine site and then transported to the assay laboratories via AWH.</p>
<b>Audits or reviews</b>	<ul style="list-style-type: none"> <li>• The results of any audits or reviews of sampling techniques and data.</li> </ul>	<p>Sampling techniques and procedures are regularly reviewed internally, as is data. To date, no external audits have been completed on the Sultan data.</p>

## Section 2 Reporting of Exploration Results

Criteria	JORC Code explanation	Commentary
<b>Mineral tenement and land tenure status</b>	<ul style="list-style-type: none"> <li>Type, reference name/number, location and ownership including agreements or material issues with third parties such as joint ventures, partnerships, overriding royalties, native title interests, historical sites, wilderness or national park and environmental settings.</li> <li>The security of the tenure held at the time of reporting along with any known impediments to obtaining a licence to operate in the area.</li> </ul>	<p>The Fremlins prospect is located within the tenement E80/5571 which is held by Hamelin Resources Pty Ltd, a 100% owned subsidiary of Hamelin Gold Ltd.</p> <p>The Olsen and Newkirk prospects are located within the tenements E80/5137 and E80/5147 which are held by Hamelin Resources Pty Ltd, a 100% owned subsidiary of Hamelin Gold Ltd.</p> <p>The Camel SE prospect is located within the tenement E80/5137 which is held by Hamelin Resources Pty Ltd, a 100% owned subsidiary of Hamelin Gold Ltd.</p> <p>The prospects are within Vacant Crown Land where the Tjurabalan People have been determined to hold native title rights.</p> <p>No historical or environmentally sensitive sites have been identified in these areas of work.</p>
<b>Exploration done by other parties</b>	<ul style="list-style-type: none"> <li>Acknowledgment and appraisal of exploration by other parties.</li> </ul>	<p>Previous exploration at the Fremlins prospect consisted of regional surface geochemical sampling including rock chip, lag, soil and auger sampling, and vacuum drill sampling. These techniques identified geochemical anomalies that were targeted with vacuum and rotary air blast (RAB) drilling followed by reverse circulation (RC) drilling . This work outlined a significant (+0.1g/t) near surface zone of gold (Au) anomalism and isolated high grade gold mineralisation.</p> <p>Previous exploration at the Olsen prospect consisted of regional surface geochemical sampling including lag, soil and auger sampling. These techniques identified geochemical anomalies that were targeted with vacuum and rotary</p>

	<p>air blast (RAB) drilling. Vacuum drilling confirmed the surface anomalism and short tight spaced RAB traverse drilled to 50m intersected a best assay of 0.61ppm Au. No further work was undertaken.</p> <p>Previous exploration at the Newkirk prospect consisted of regional surface geochemical sampling including lag, soil and auger sampling. These techniques identified Au-Bi geochemical anomalies that were targeted with a vacuum and rotary air blast (RAB) drilling. Broad spaced vacuum drilling confirmed the surface anomalism and a single short tight spaced traverse of 4 RAB holes were drilled to 40m and intersected a best assay of 0.13ppm Au. No further work was undertaken.</p> <p>Previous exploration at the Camel SE prospect consisted of regional surface geochemical sampling including lag, soil and auger sampling. These techniques identified scattered Au geochemical anomalism.. Broad spaced vacuum drilling confirmed the surface anomalism. No further work was undertaken.</p>
<p><b>Geology</b></p> <ul style="list-style-type: none"> <li>• <i>Deposit type, geological setting and style of mineralisation.</i></li> </ul>	<p>The prospect is situated in the Proterozoic Tanami Province of Western Australia.</p> <p>The Fremlins, Olsen, Newkirk and Camel SE prospects are considered prospective for orogenic gold mineralisation.</p>
<p><b>Drill hole Information</b></p> <ul style="list-style-type: none"> <li>• <i>A summary of all information material to the understanding of the exploration results including a tabulation of the following information for all Material drill holes:</i> <ul style="list-style-type: none"> <li>○ <i>easting and northing of the drill hole collar</i></li> <li>○ <i>elevation or RL (Reduced Level – elevation above sea level in metres) of the drill hole collar</i></li> <li>○ <i>dip and azimuth of the hole</i></li> <li>○ <i>down hole length and interception depth</i></li> <li>○ <i>hole length.</i></li> </ul> </li> <li>• <i>If the exclusion of this information is justified on the basis that the information is not Material and this exclusion does not detract from the understanding of the report, the Competent Person should clearly explain why this is the case.</i></li> </ul>	<p>Refer to tabulation in the body of this announcement.</p>
<p><b>Data aggregation methods</b></p> <ul style="list-style-type: none"> <li>• <i>In reporting Exploration Results, weighting averaging techniques, maximum and/or minimum grade truncations (eg cutting of high grades) and cut-off grades are usually Material and should be stated.</i></li> <li>• <i>Where aggregate intercepts incorporate short lengths of high grade results and longer lengths of low grade results, the procedure used for such</i></li> </ul>	<p>All reported assays have been length weighted, with a nominal 100ppb Au cut-off.</p> <p>No metal equivalents have been reported in this announcement.</p>

	<p>aggregation should be stated and some typical examples of such aggregations should be shown in detail.</p> <ul style="list-style-type: none"> <li>The assumptions used for any reporting of metal equivalent values should be clearly stated.</li> </ul>	
<b>Relationship between mineralisation widths and intercept lengths</b>	<ul style="list-style-type: none"> <li>These relationships are particularly important in the reporting of Exploration Results.</li> <li>If the geometry of the mineralisation with respect to the drill hole angle is known, its nature should be reported.</li> <li>If it is not known and only the down hole lengths are reported, there should be a clear statement to this effect (eg 'down hole length, true width not known').</li> </ul>	The geometry of the mineralisation is not yet known due to insufficient drilling in the targeted area and therefore down hole length vs true width is not known.
<b>Diagrams</b>	<ul style="list-style-type: none"> <li>Appropriate maps and sections (with scales) and tabulations of intercepts should be included for any significant discovery being reported These should include, but not be limited to a plan view of drill hole collar locations and appropriate sectional views.</li> </ul>	Refer to body of this announcement
<b>Balanced reporting</b>	<ul style="list-style-type: none"> <li>Where comprehensive reporting of all Exploration Results is not practicable, representative reporting of both low and high grades and/or widths should be practiced to avoid misleading reporting of Exploration Results.</li> </ul>	All significant intervals are reported with a 100ppb Au lower cut-off
<b>Other substantive exploration data</b>	<ul style="list-style-type: none"> <li>Other exploration data, if meaningful and material, should be reported including (but not limited to): geological observations; geophysical survey results; geochemical survey results; bulk samples – size and method of treatment; metallurgical test results; bulk density, groundwater, geotechnical and rock characteristics; potential deleterious or contaminating substances.</li> </ul>	All meaningful and material information has been included in the body of the text. No metallurgical or mineralogical assessments have been completed.
<b>Further work</b>	<ul style="list-style-type: none"> <li>The nature and scale of planned further work (eg tests for lateral extensions or depth extensions or large-scale step-out drilling).</li> <li>Diagrams clearly highlighting the areas of possible extensions, including the main geological interpretations and future drilling areas, provided this information is not commercially sensitive.</li> </ul>	<p>An additional heritage survey is required to be completed over the southern part of the Fremlins South LAG anomaly. Following this aircore drill testing will be undertaken to test the bedrock expression of the anomalism. It is envisaged that these will be undertaken from March to May 2024.</p> <p>An additional heritage survey is required to be completed over the western part of the Olsen LAG anomalies. Further work to assess the mineralisation will include RC drill testing of bedrock mineralisation and surface sampling to better define the anomaly and aircore drill testing. It is envisaged that these will be commenced from April to June 2024.</p> <p>At Newkirk further work to assess the mineralisation will include surface sampling to better define the anomaly and then aircore drill testing. A decision</p>

to RC drill test will be made following assessment of aircore drill results. It is envisaged that these will be commenced from April to June 2024.

At Camel SE further work to assess the mineralisation will include surface sampling to better define and understand the anomaly. A decision will be then made to undertake aircore drill testing. It is envisaged that these will be commenced from April to June 2024.